



aluplast®

WINDOW SYSTEMS

VARIETY OF CHOICE, FREEDOM OF CREATION

IDEAL NEO AD window system



- OPTICAL LIGHTNESS**
Contemporary-designed rebates, which are narrower almost by half than in other aluplast systems, create the impression of lightness and elegance.
- MORE LIGHT**
Extremely narrow profile combination allows for maximization of the glazed area and let more light enter the interior.
- DESIGN SQUARED**
Thanks to its simple, symmetrical shapes, the NEO system perfectly embodies modernity and elegance.



Simple structures, minimalist design

Distinctive angles with strong architectural shape but with lightness of design. Simple, symmetrical, cubist shape is the hallmark of the NEO series. This system meets the highest energy efficiency requirements and the latest design trends. Lots of light and a combination of interior and exterior elements - themes that are as relevant as ever, even today after 100 years.

Technical characteristics

| | |
|--|------------------|
| Profile depth: | 76 mm |
| Frame/sash combination width: | 110 / 115 mm |
| Maximum glazing width: | 54 mm |
| U _f heat transfer coefficient: | 1.2 W/m²K |
| U _w heat transfer coefficient*: | up to 0.79 W/m²K |
| Sealing system: | double (2 seals) |

*value estimated for a referential window 1230x1480 mm (with Ug = 0,5 W/m²K glazing unit)

IDEAL NEO AD

| | |
|-------------------------------|--------------------------|
| Number of chambers: | 5-6 |
| Aluskin aluminium shells: | no |
| Reinforcement system: | steel |
| Foam inside technology: | available |
| Available core colours: | white, brown, anthracite |
| Available combination design: | non-flush, classic line |

IDEAL NEO MD window system



ENERGY EFFICIENCY

In the new profile series it is possible to apply the glazing units and fillings up to 54 mm width.

BETTER PROTECTION AGAINST BURGLARY

A special extruded centre rebate in the MD variant constitutes a barrier when trying to reach the fittings and force the sash.

HIGH TIGHTNESS

A third, internal seal in the MD variant adheres to the rebate, which ensures better tightness of the entire structure and improves thermal and acoustic properties.



Design meets technology

IDEAL NEO MD combines the most innovative aluplast technologies with unique design. A special extruded centre rebate „safetec inside“ constitutes a barrier when trying to reach the fittings and force the sash.

The NEO series is a new dimension in window design, able to meet the highest energy efficiency requirements and the latest design trends.

Technical characteristics

| | |
|--|------------------|
| Profile depth: | 76 mm |
| Frame/sash combination width: | 110 mm |
| Maximum glazing width: | 54 mm |
| U _f heat transfer coefficient: | 1.1 W/m²K |
| U _w heat transfer coefficient*: | up to 0.76 W/m²K |
| Sealing system: | triple (3 seals) |

*value estimated for a referential window 1230x1480 mm (with Ug = 0,5 W / m²K glazing unit)

IDEAL NEO MD

| | |
|-------------------------------|--------------------------|
| Number of chambers: | 5-6 |
| Aluskin aluminium shells: | no |
| Reinforcement system: | steel |
| Foam inside technology: | available |
| Available core colours: | white, brown, anthracite |
| Available combination design: | non-flush, classic line |

IDEAL 8000 window system



OPTICAL LIGHTNESS

The system's design features a low sash height, giving the window a sleek appearance.

SECURITY

IDEAL 8000 is one of the few systems on the market with the so-called „classic middle seal“. This provides better sealing for the entire structure and makes it more difficult to force open the sash.

RELIABILITY

The three-seal system used means a significantly longer life of the hardware mechanisms, which are isolated from external conditions in the so-called dry chamber.



Windows without compromises

Awarded the Gold Medal at Budma Construction Fair, IDEAL 8000 is a combination of state-of-the-art technical solutions for above-average properties, guaranteeing warmth, silence, safety and exceptional aesthetics of the window. This is an excellent option for all those who want the highest comfort of living. The IDEAL 8000 window system also boasts an extraordinary, distinctive design that allows for original architectural solutions and excellent aesthetic qualities.

Technical characteristics

| | |
|--|------------------|
| Profile depth: | 85 mm |
| Frame/sash combination width: | 119 mm |
| Maximum glazing width: | 51 mm |
| U _f heat transfer coefficient: | 1.0 W/m²K |
| U _w heat transfer coefficient*: | up to 0.74 W/m²K |
| Sealing system: | triple (3 seals) |

*value estimated for a referential window 1230x1480 mm (with Ug = 0,5 W/m²K glazing unit)

IDEAL 8000

| | |
|-------------------------------|--------------------------|
| Number of chambers: | 6 |
| Aluskin aluminium shells: | available |
| Reinforcement system: | steel |
| Foam inside technology: | available |
| Available core colours: | white, brown, anthracite |
| Available combination design: | non-flush, classic line |

Intertec 85 MD window system



MORE LIGHT

The low combinations of profiles with a width of 115 mm allow to maximize the surface area of the glazing.

WARMTH AS STANDARD

An excellent choice for those who are looking for solutions that are not only aesthetically pleasing, but also energy efficient.

RELIABILITY

The three-seal system used means a significantly longer life of the hardware mechanisms, which are isolated from external conditions in the so-called dry chamber.



Power of the centre seal system

The Intertec 85 MD is an advanced system of window profiles that, thanks to the use of innovative solutions, offers excellent technical parameters and high comfort of use of windows. New two-chamber design of the middle sealing fin of the Intertec 85 MD system is highly resilient and reacts dynamically to the air pressure acting on the sash. This solution provides increased protection from wind, rain and better sound insulation.

Technical characteristics

| | |
|--|---------------------|
| Profile depth: | 85 mm |
| Frame/sash combination width: | 115 mm |
| Maximum glazing width: | 51 mm |
| U _f heat transfer coefficient: | 1.0 W/m²K |
| U _w heat transfer coefficient*: | up to 0.74 W/m²K |
| Sealing system: | triple (2 + 1 seal) |

*value estimated for a referential window 1230x1480 mm (with Ug = 0,5 W/m²K glazing unit)

Intertec 85 MD

| | |
|-------------------------------|--------------------------|
| Number of chambers: | 7 (frame), 8 (sash) |
| Aluskin aluminium shells: | no |
| Reinforcement system: | steel |
| Foam inside technology: | no |
| Available core colours: | white, brown, anthracite |
| Available combination design: | non-flush, classic line |

IDEAL 7000 window system



ENERGY EFFICIENCY
The system offers the possibility of using energy-efficient glazing units up to 51 mm thick.

COMFORT OF USE
The classic, proven construction ensures trouble-free operation for many years.

CLASSIC DESIGN
The timeless profile styling ensures that windows in the IDEAL 7000 system will complement any architectural style.



New standard of energy efficiency

The IDEAL 7000 is an example of synergistic utilization of profile properties and insulated glass units to create windows characterized by very low thermal transmittance. The obtained thermal transmittance coefficient in tests for profiles with a value of up to $U_f=1.0\text{ W/m}^2\text{K}$, combined with the ability to use wider and warmer glazing units up to 51 mm thick, ensures the best thermal performance of the window.

Technical characteristics

| | |
|-----------------------------------|-------------------------------|
| Profile depth: | 85 mm |
| Frame/sash combination width: | 119 mm |
| Maximum glazing width: | 51 mm |
| U_f heat transfer coefficient: | 1.0 - 1.1 W/m ² K |
| U_w heat transfer coefficient*: | up to 0.77 W/m ² K |
| Sealing system: | double (2 seals) |

*value estimated for a referential window 1230x1480 mm (with $U_g = 0.5\text{ W/m}^2\text{K}$ glazing unit)

IDEAL 7000

| | |
|-------------------------------|--------------------------|
| Number of chambers: | 6 |
| Aluskin aluminium shells: | yes |
| Reinforcement system: | steel, powerdur |
| Foam inside technology: | yes |
| Available core colours: | white, brown, anthracite |
| Available combination design: | non-flush, classic line |

IDEAL 7000 door system



SURFACE PANEL

In addition to the standard filling, you can choose a variant with an optional decorative panel, which, covering the surface of the sash, creates a unique visual effect.

STRUCTURAL STABILITY

The solid steel reinforcement in the main chamber of the door profile ensures frame stability.

LOW DOOR THRESHOLD

The low door threshold with a height of 20 mm meets the requirements for barrier-free construction and enables easy entry and exit.



Make a strong entrance

The new IDEAL 7000 entrance doors are characterized by excellent thermal insulation and are compatible with the IDEAL 7000 and IDEAL 8000 window system series. Thanks to the multi-chamber construction and a depth of 85 mm, as well as the use of a door threshold with a thermal insulation insert, it was possible to significantly improve the thermal insulation parameters, achieving a U_f value of 1.2 W/m²K. The new profiles allow for the use of glazing units and fillings up to 50 mm thick.

Technical characteristics

| | |
|-----------------------------------|-------------------------------|
| Profile depth: | 85 mm |
| Frame/sash combination width: | 158 mm |
| Maximum glazing width: | 50 mm |
| U_f heat transfer coefficient: | 1.2 W/m ² K |
| U_w heat transfer coefficient*: | up to 0.82 W/m ² K |
| Sealing system: | double (2 seals) |

*value estimated for a referential window 1230x1480 mm (with $U_g = 0,5$ W/m²K glazing unit)

IDEAL 7000 door system

| | |
|-------------------------------|---|
| Number of chambers: | 6 |
| Aluskin aluminium shells: | no |
| Reinforcement system: | steel |
| Foam inside technology: | yes |
| Available core colours: | white, brown, anthracite |
| Available combination design: | hidden sash with panel, non-flush, classic line |

IDEAL 4000 window system



OPTICAL LIGHTNESS

The system's design is characterized by a small combination width, which makes the window look slimmer.

MORE POSSIBILITIES

In the configuration with a semi-flush sash in the IDEAL 4000 system, it is possible to create even warmer structures with glazing units up to 48 mm wide.

FREEDOM OF CHOICE

Unique design is combined with many system solutions and profile shapes.



Enjoy the range of possibilities

The IDEAL 4000 window system is one of the most comprehensive systems in terms of profile shapes availability. A wide selection of configurations allows for easy customization of style to personal preferences. A semi-flush sash allows for use of energy-efficient glazing units up to 48 mm wide. For those seeking exceptional opportunities to create their windows, the Round Line series was created, distinguished by delicate optics and gentle curves.

Technical characteristics

| | |
|--|------------------|
| Profile depth: | 70 - 85 mm |
| Frame/sash combination width: | 114 mm |
| Maximum glazing width: | 48 mm |
| U _f heat transfer coefficient: | 1.2 - 1.4 W/m²K |
| U _w heat transfer coefficient*: | up to 0.83 W/m²K |
| Sealing system: | double (2 seals) |

*value estimated for a referential window 1230x1480 mm (with Ug = 0,5 W / m²K glazing unit)

IDEAL 4000

| | |
|-------------------------------|---|
| Number of chambers: | 5-6 |
| Aluskin aluminium shells: | no |
| Reinforcement system: | steel |
| Foam inside technology: | yes |
| Available core colours: | white, brown, anthracite |
| Available combination design: | non-flush, semi-flush classic line, round line |

Smart-slide NEO sliding door

EXIT TO THE PATIO

MORE CONVENIENT THAN EVER

Smart-slide NEO offers a minimalist design inspired by Scandinavian aesthetics. Simple, symmetrical shapes and slim, distinct profiles give the windows extraordinary lightness and elegance.



Choose Smart-slide NEO sliding patio door: let the sunlight in

The non-openable part of the fixed glazing realized in extremely narrow profiles allows maximization of glazed areas and reduction of frame area, which is in line with customer expectations and trends in modern glazing design.



DESIGN SQUARED

Simple, symmetrical shapes make Smart-slide NEO a perfect combination of modernity and elegance.



INTUITIVE OPERATION

After unlocking, the door slides with exceptional smoothness, requiring minimal force.



TIGHTNESS

By turning the handle, the perimeter gaskets are compressed transversely against the frame, ensuring a tight seal all around.



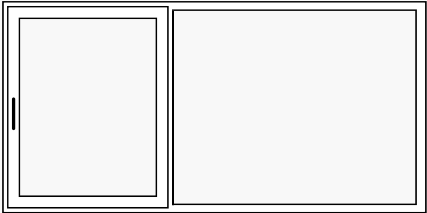
Smart-slide NEO sliding door

Smart-slide NEO sliding doors allow the creation of glazed structures measuring 6 x 2.5 meters. They can be configured in Configuration A (symmetrical or asymmetrical division) or Configuration C, with two panels sliding to the sides.

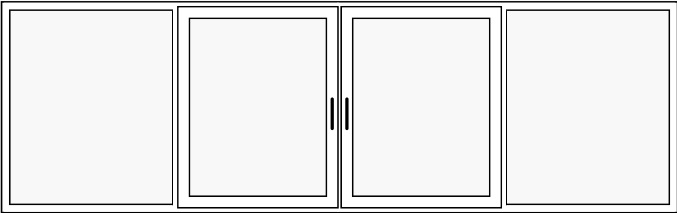


Technical characteristics

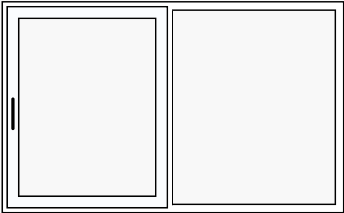
| | |
|---|----------------|
| Profile depth frame / sash: | 154 mm / 78 mm |
| U _f heat transfer coefficient: | 1.3 W/m²K |
| Maximum glazing width: | 52 / 54 mm |
| Maximum construction width: | 6000 mm |
| Maximum construction height: | 2500 mm |



Scheme A asymmetrical



Scheme C



Scheme A symmetrical



INTUITIVE OPERATION

Turning a large handle downward from the closed position raises the sash by a few millimeters, releases the seal compression, and allows for smooth sliding of the sashes

FUNCTIONALITY

Special hardware mechanisms enable the movement of large sashes with minimal effort.

RELIABILITY

Stable support and smooth bogies guidance ensure trouble-free use for many years.

HST 85 MM lift & slide door

PERFECT CONNECTION OF INTERIOR AND TERRACE

HST sliding doors are window structures that allow for large-scale glazing, providing excellent ease of use. Sliding terrace windows blur the boundary between the home and the garden. This provides excellent natural light for interior spaces and visually adds spaciousness.

Choose HST 85 MM patio door: enjoy a panoramic view

One of the undeniable advantages of this type of terrace door is the range of possible dimensions. The width of the sash can be between 800 mm and 3200 mm and the height can be up to 2700 mm in white, which allows to create even more than six meters of glazing.



BARRIER-FREE HOME

The low door threshold with a height of 48 mm, which can be recessed from the side of the room in its entire height, meets the requirements for architectural barrier-free construction.



PANORAMIC VIEWS

Lift & slide doors allow for the creation of impressive, sliding glass walls that seamlessly integrate the interior of your home with the surroundings.



BRIGHTENED INTERIOR

HST 85 MM also means more natural light entering the rooms and efficient use of solar thermal energy.



HST 85 MM lift & slide door

FREEDOM OF CONFIGURATION

CREATE YOUR SPACE

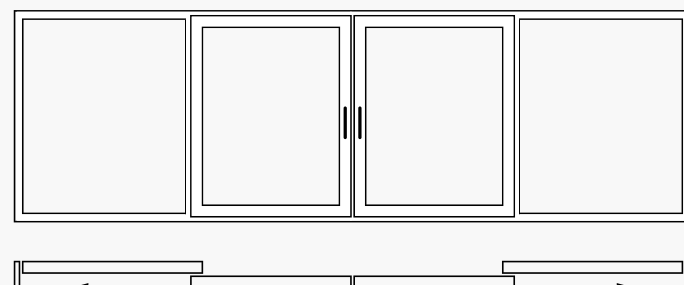
A characteristic feature of HST 85 doors is the modular nature of the construction, allowing for any product configuration based on expected parameters and functionality.

HST 85 mm lift-and-slide doors can come in at least several different versions and arrangements of sashes and non-opening parts.

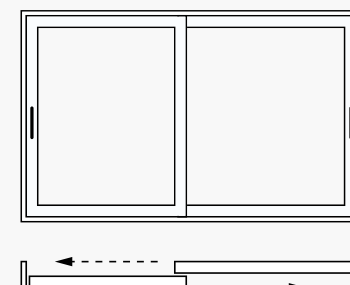
The most popular HST door layouts are 2-quarter versions – where one or both sashes are movable, or 4-quarter versions – where two central or all sashes are movable.



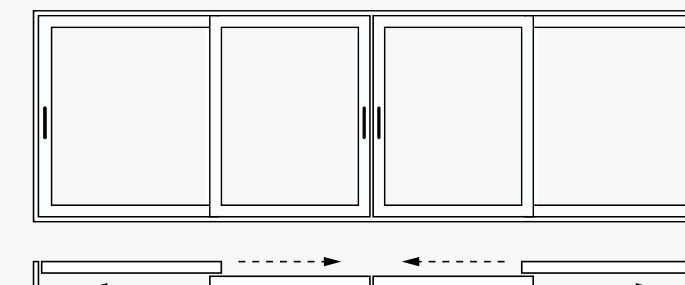
Scheme A



Scheme C

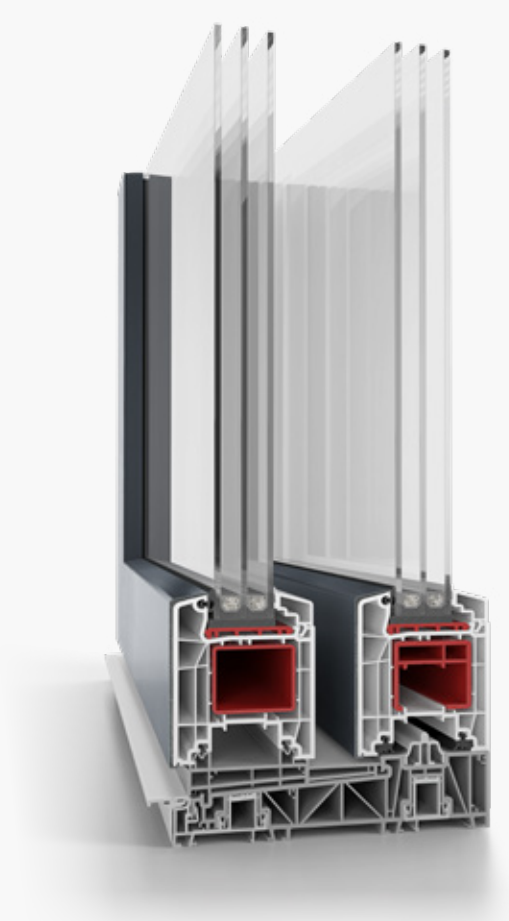


Scheme D



Scheme F

HST 85 MM lift & slide door



Technical characteristics

| | |
|---|------------------------------|
| Profile depth frame / sash: | 197 mm / 85 mm |
| U _f heat transfer coefficient: | up to 1.1 W/m ² K |
| Maximum glazing width: | 51 mm |
| Maximum construction width: | 6500 mm |
| Maximum construction height: | 2700 mm |

These large-sized windows allow you to eliminate all restrictions, save space and freely shape the space in your home.



Premium decorative surfaces

WOODEC & ALUDEC

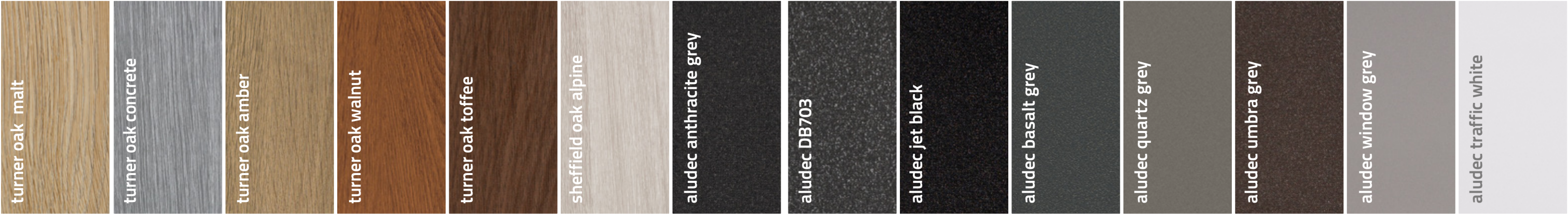
Inspired by nature

A faithfully preserved appearance of real wood and a unique character combined with all the advantages of a plastic window – this is what the new woodec decorative structures offer. Not only is it difficult to distinguish visually from the natural material, but the woodec structure also recreates wood very realistically to the touch, thanks in part to deep embossing and a matte top layer.

Inspired by style

The attractive surface of aludec decorative structures, distinguished by a unique fine-grained, matt surface with a structure of powder-painted aluminum, is certainly a proposal that will go well in modern, minimalist arrangements.

The new aludec structures follow this trend, as they are offered in seven attractive shades, ranging from whites and greys, through brown, anthracite, and metallic Alux to deep black.



aluplast®

aluplast sp. z o.o. | Profilowa 1, 63-006 Nagradowice, Poland
OFFICE: Gołężycka 25A, 61-357 Poznań, tel. +48 61 654 34 00 | marketing@aluplast.com.pl | www.aluplast.com.pl